



Request for Bids (RFB) For: MBCPR War Memorial Park Inclusive playground

RFB Posted: 4/18/25 at 9:00AM

Bids Due: 5/18/25 at 4:00 PM

Introduction

Martinsburg Berkeley County Parks & Recreation (MBCPR) will receive sealed bids for this RFP at the Administrative Office located at 273 Woodbury Avenue, Martinsburg, WV 25404.

For more information about the project, please contact Joe Burton, MBCPR Executive Director at joe.burton@mbcparks-rec.org

Background

The successful bidder will provide a playground completed to the specifications included in this document at **War Memorial Park, 500 N. Tennessee Ave, Martinsburg, WV**

Pre-Bid meeting

Pre-bid site inspections will be available 4/29/25 at 1pm.

Parks Director, Joe Burton will be available for questions during this time. Though the meeting is not mandatory, attendance is encouraged.

Submission Procedure & Opening

The sealed bids will be accepted until the date and time listed above (**beginning 4/18/25 and due by 5/18/25**), to the MBCPR, 273 Woodbury Avenue, Martinsburg, WV 25404. All bids should be marked "Inclusive Playground" attention to "Joe Burton". Bids may be made in lumpsum figures.

BID Evaluation and Award of Contract

All Bids will be reviewed by the MBCPR Board.

This RFB does not commit the MBCPR to pay any costs incurred in the preparation of the Bids or to contract for the goods and/or services offered. The MBCPR reserves the right to accept or reject any or all bids received as a result of this request. An award will be made by the MBCPR.

Project Completion

The project described in this bid must be completed by November 20, 2025.

Contractor Requirements

- Contractor must hold a valid WV Contractors License at time of bid and obtain a City of Martinsburg business license prior to beginning work.

- Contractor shall maintain general liability and property damage insurance (\$1,000,000 per incident, 1,000,000 in aggregate) and workers compensation coverage as required by law. Copies of the insurance certificate must be included in the bid documents.
- DBE Requirements:
Each Contractor must fully comply with the requirements, terms, and conditions as set forth in the contract documents to achieve Disadvantaged Business Enterprise (DBE) participation during the performance of this contract. The bidder commits itself to the program for DBE participation and all other requirements, terms, and conditions of the bid conditions by submitting a properly signed bid.
- Nondiscrimination in Employment:
Contractor on this work will be required to comply with the President's Executive Order No. 11246. The requirements for bidders and contractors under this order are explained in the specifications.

Bid Contents

Bids must include the following in two separate envelopes inside of one large, sealed envelope:

First Envelope Shall Contain:

- *WV contractor's License*
- *Insurance Information*
- *Two professional references*
- *Photos of similar work completed*
- *Please specify all warranties provided.*
- *5% bid bond*
- *Any proposed subcontractors*
- *All relevant Certifications (i.e. non-segregation, Equal Employment Opportunity, Disadvantaged Business Enterprises, Build America, Buy America, Drug-Free Workplace Affidavit)*

Second Envelope Shall Contain:

- *Complete lump sum proposal for the Inclusive Playground as described in scope of work, any additional materials required, and all labor*

Contractor will attend the following construction meetings for the project:

- Pre-construction meeting to review schedule and final details
- Weekly site meetings during construction
- Walk-through at substantial completion

Scope of Work

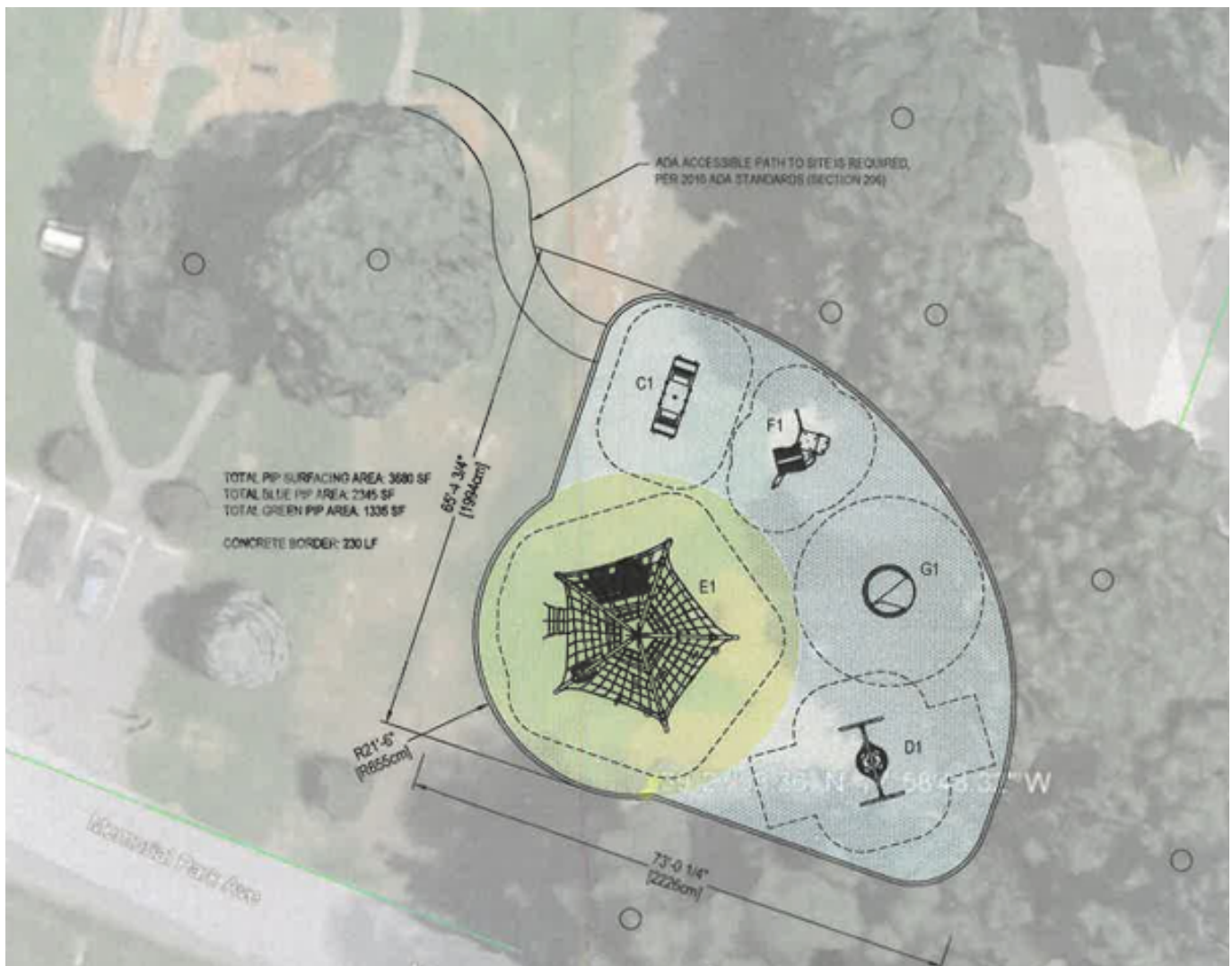
Contractor will provide the following services:

- Mark the limits of construction with MBCPR representative
- Provide any necessary storm water management measures (silt fence, Silt socks, inlet protection, etc)
- Grade and prepare site for playground, make allowance for rock removal which may be required
- Supply and Install inclusive sensory dome feature (Kompan COR856001-0403) or equivalent to manufacturer's specifications
- Install 4" compacted stone base to specifications provided by Poured in place (PIP) rubber surface vendor
- Supply and install 1335 SF of PIP playground surface in owners chosen color, in the area under and around the sensory dome
- Tie in 6' wide accessible sidewalk from existing asphalt on the park drive to new PIP surface
- Complete walk-through inspection with owner at the time of substantial completion

Inclusive Playground Site Plan

War Memorial Park, 500 N. Tennessee Ave, Martinsburg, WV

Area E1 is the subject of this RFP. Other areas are future additions.



Base Bid Specifications:

Base bid should include the following items. Contractor will supply and install:

- Sensory Dome climbing structure, Kompan COR856001-0403 or equivalent (1)
 - Poured in place rubber surface (specify manufacture specs) (approx. 1335 SF) installed over compacted stone base.
 - Concrete curbing as required
 - 6' wide sidewalk from park road to PIP surface along the Western limits of construction.
 - All excavation and rock removal as required for Playground installation
-
- Please provide alternate pricing for an optional 6' sidewalk from new playground extending up hill to connect with existing sidewalk. Must meet ADA accessibility standards